


Name of supplier	KW-Commerce GmbH
Address of supplier	Jägerstr. 41 10117 Berlin Deutschland
Model Identifier and other applicable models below	49033.02
49033.43 49033.17 49033.09 49033.02	 28 October 2021 Katharina Zelisko Business Unit Director

**Specific precautions that shall be taken when the model is assembled, installed, maintained or tested**

See user manual

**Disposal recommendations at the end of the light source's life time (Directive 2012/19/EU)**

Translations and national adaptations are included in the user manual of the item, supplied with the light source or its containing product.

The Waste Electrical and Electronic Equipment (WEEE) Directive aims to minimise the impact of electrical and electronic goods on the environment, by increasing re-use and recycling and by reducing the amount of WEEE going to landfill. The symbol on this product or its packaging signifies that this product must be disposed separately from ordinary household wastes at its end of life. Be aware that this is your responsibility to dispose of electronic equipment at recycling centers in order to conserve natural resources. Each country should have its collection centers for electrical and electronic equipment recycling.

For information about your recycling drop off area, please contact your related electrical and electronic equipment waste management authority, your local city office, or your household waste disposal service.

Contained Light Source(s)	Pieces
49033_LS	1

Contained Separate Control Gear(s)	Pieces
49033_SCG	1

**Light Sources can be replaced by end-user or qualified persons?**

Non-replaceable

**Separate Control Gears can be replaced by end-user or qualified persons?**

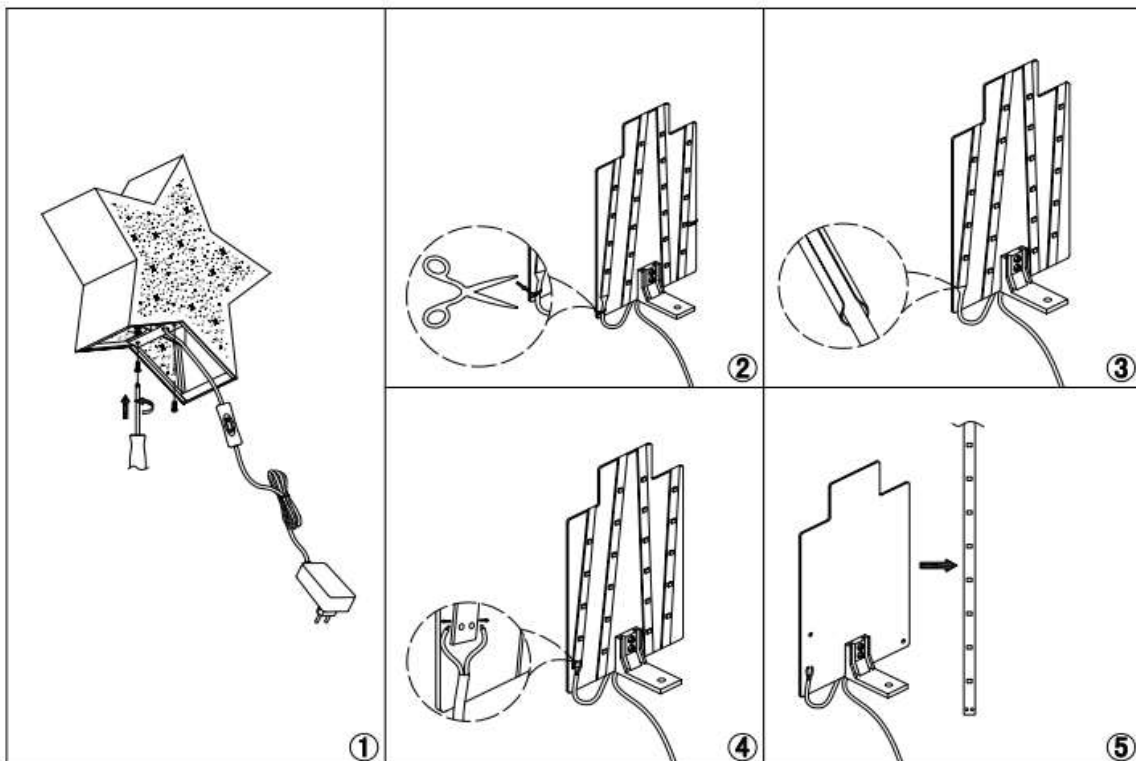
Professionally replaceable

**Instructions on how to remove lighting control parts and/or non-lighting parts, if any, or how to switch them off or minimise their power consumption during light source testing**

This product is a legacy product. It was not designed to offer user replaceability of parts or components. The separate control gear can be replaced by a professional electrician. Ensure to disconnect the product from the electric socket before installing or uninstalling the containing product and follow the user manual of the containing product.

**Exploded Drawing:**

1. Remove 2 screws at the bottom of the frame and take the frame out.
2. Cut the cable tie on both end of the LED stripe.
3. Cut the heat-shrinkable tube at the wiring connection.
4. Disconnect the output wire of the driver from the LED stripe via soldering gun.
5. Remove the LED strip from the skeleton and the rest of the part is the driver.


**You Will Need:**
